



Linoleum Sheet

marmoleum[®] solid

walton | concrete | cocoa | piano



creating better environments

**Marmoleum Decibel
to order**

All Marmoleum Solid colours
can be ordered in a 3.5 mm
Marmoleum Decibel
construction.
Contact sales support
for more information.

**Marmoleum Decibel
from stock**

Scan the QR code
for the actual
Marmoleum Decibel
stocked items





marmoleum® solid

Connect with Modern Nature

Discover a harmonious connection with modern nature through Marmoleum Solid, a climate positive flooring that fosters your well-being. Crafted from natural raw materials, this collection is designed to elevate any space with its refined aesthetics.

The balanced colour palette effortlessly blends with contemporary trends while remaining true to its natural essence. Marmoleum Solid enhances any interior, making the surroundings the hero for many years to come.

The story of nature is in our genes!

Step into Modern Nature

Nature's story unfolds with Marmoleum Solid. This well-curated palette empowers architects and interior designers to make limitless combinations within the collection but also with other interior materials.

Marmoleum Solid is your reliable partner for modern and balanced spatial design with a natural feel.

MODERN NATURE

- Up to 98% natural raw materials
- Climate positive without offsetting
- Circular ready and PVC free

MODERN DESIGN

- Contemporary natural palette with muted and neutral tones
- Connecting effortlessly with other interior materials
- Crafted with your wellbeing in mind

MODERN USAGE

- Designed to last with the Topshield pro surface finish
- Easy to clean and maintain: no need to wax or polymer
- Bacteriostatic and hygienic with anti-viral properties



marmoleum[®]
climate positive
CRADLE TO GATE









3378 | stucco



3367 | alloy

LRV 25%
NCS S 5500-N



3323 | black

LRV 4%
NCS S 9000-N



3374 | cobalt grey

LRV 7%
NCS S 8005-B20G



3375 | grey adobe

LRV 17%
NCS S 6502-Y



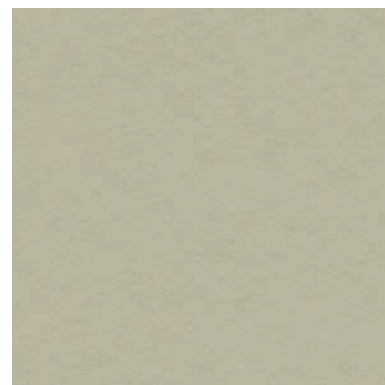
2.5 mm



3371 | cement LRV 30%
NCS S 4502-Y



3369 | titanium LRV 48%
NCS S 2502-Y



3378 | stucco LRV 43%
NCS S 3005-Y20R



3355 | rosemary green LRV 21%
NCS S 5010-G70Y



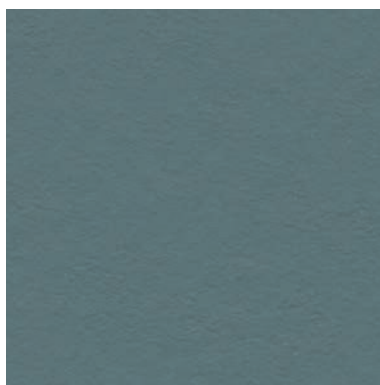
3360 | vintage blue LRV 29%
NCS S 3020-B



3370 | terracotta LRV 18%
NCS S 5030-Y40R



3376 | peat LRV 11%
NCS S 7502-Y



3377 | North Sea blue LRV 18%
NCS S 6010-B10G



3352 | Berlin red LRV 10%
NCS S 4050-Y80R



3359 | bottle green LRV 7%
NCS S 8010-G30Y



3358 | petrol LRV 9%
NCS S 7020-B10G

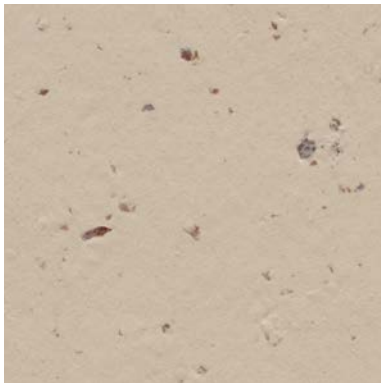


3353 | eggplant purple LRV 8%
NCS S 8005-Y80R

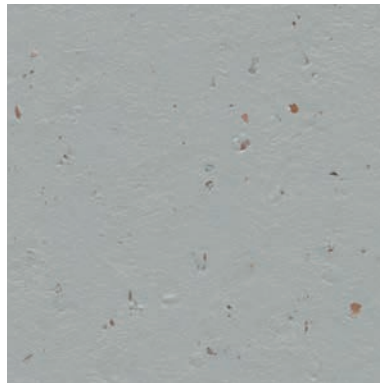


3588 | eucalyptus

LRV 31%
NCS S 3005-G50Y



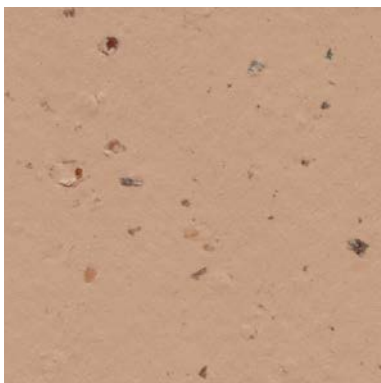
3590 | meringue
LRV 51%
NCS S 2005-Y40R



3582 | earl grey chocolate
LRV 33%
NCS S 3502-B



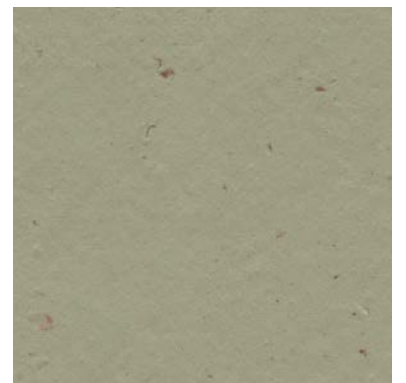
3584 | white chocolate
LRV 60%
NCS S 2010-Y



3592 | salted caramel
LRV 32%
NCS S 3020-Y40R



3586 | indigo milk
LRV 23%
NCS S 4010-R90B



3593 | matcha
LRV 31%
NCS S 4010-G70Y



3580 | milk chocolate
LRV 20%
NCS S 6005-Y50R



3583 | chocolate blues
LRV 9%
NCS S 7005-R80B



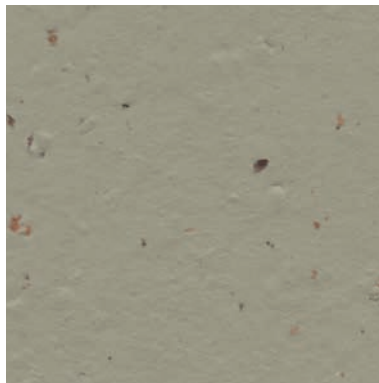
3589 | nori
LRV 25%
NCS S 5000-N



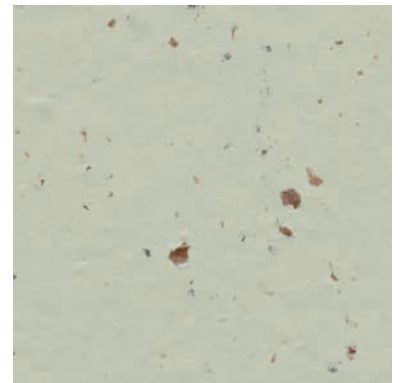
3593 | matcha



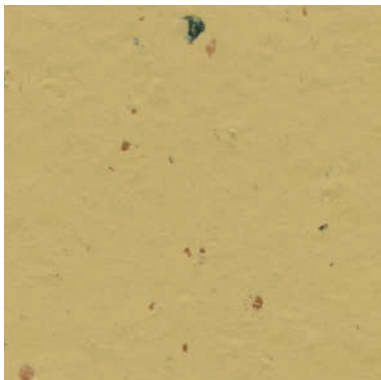
3595 | panna cotta LRV 28%
NCS S 5005-Y20R



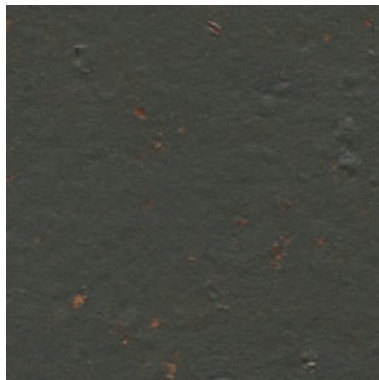
3596 | hummus LRV 41%
NCS S 3010-G90Y



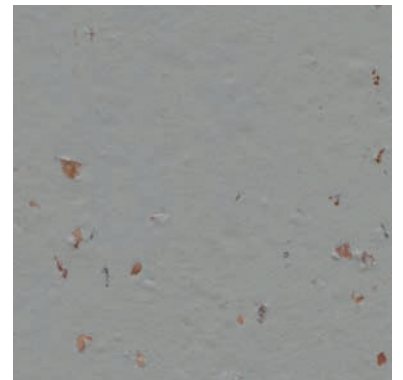
3585 | stracciatella LRV 47%
NCS S 2010-G60Y



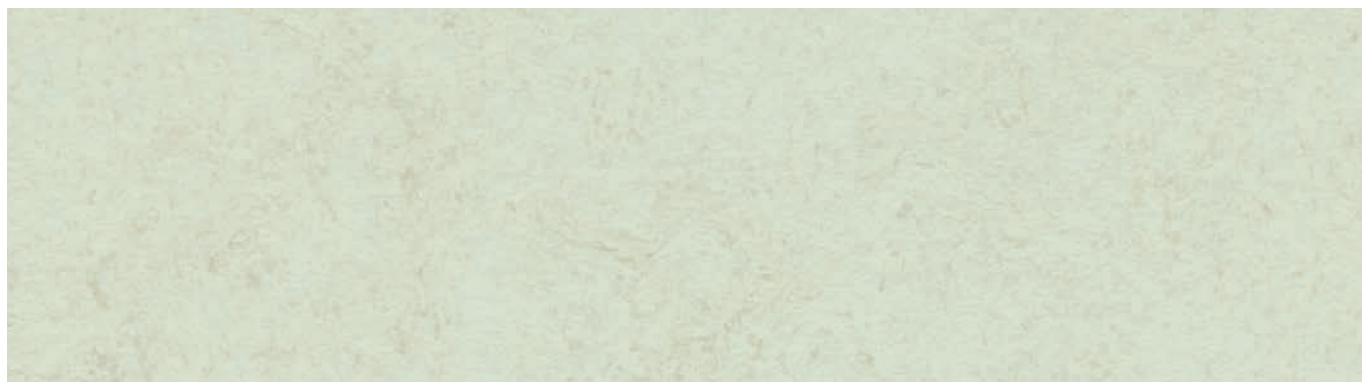
3587 | curcuma LRV 34%
NCS S 3030-Y10R



3591 | black tea LRV 9%
NCS S 8000-N

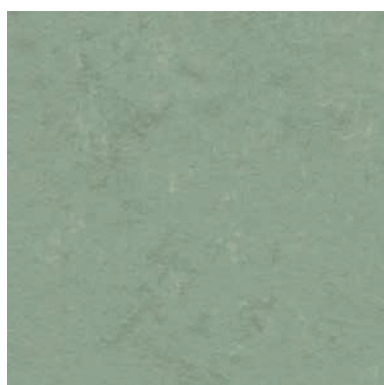


3594 | chia seeds LRV 27%
NCS S 5000-N



3749 | Arctic

LRV 60%
NCS S 1540-G40Y



3750 | pine forest

LRV 31%
NCS S 4010-G10Y



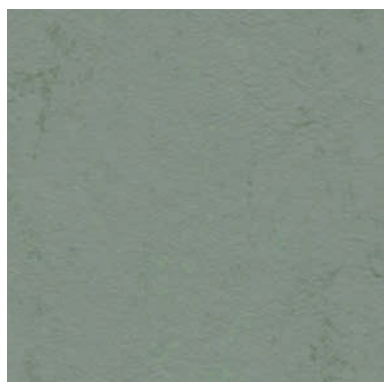
3732 | asteroid

LRV 45%
NCS S 3005-G20Y



3755 | glacier

LRV 33%
NCS S 4005-G20Y



3751 | tundra

LRV 24%
NCS S 5010-G30Y



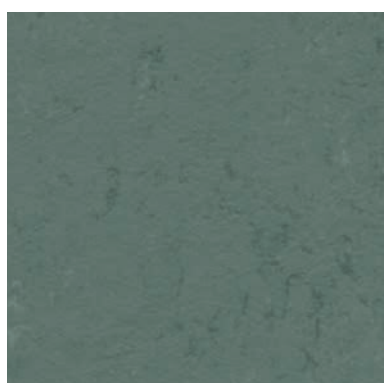
3753 | blue ice

LRV 30%
NCS S 4010-B10G



3756 | Neptune

LRV 18%
NCS S 6005-B80G



3752 | taiga

LRV 16%
NCS S 6010-B70G



3754 | Sirius

LRV 12%
NCS S 6020-B10G



3725 | cosmos

LRV 9%
NCS S 7502-B



3757 | Pluto

LRV 51%
NCS S 2010-G70Y



3724 | orbit

LRV 37%
NCS S 3502-Y



3758 | shale

LRV 41%
NCS S 3010-G90Y



3760 | dust

LRV 38%
NCS S 3005-Y



3704 | satellite

LRV 23%
NCS S 5502-Y



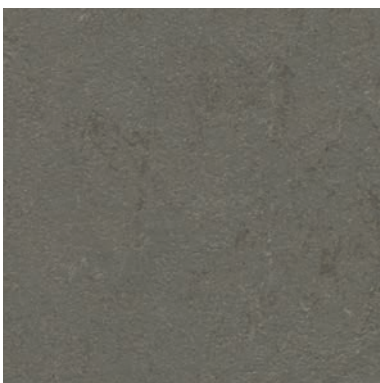
3759 | Mercury

LRV 28%
NCS S 5005-Y20R



3706 | beton

LRV 28%
NCS S 5005-G80Y



3723 | nebula

LRV 17%
NCS S 6500-N



3702 | liquid clay

LRV 23%
NCS S 5005-Y20R



3703 | comet

LRV 14%
NCS S 6502-G



3727 | drift 3709 | silt 5232 | rocky ice



3761 | Titan

LRV 41%
NCS S 3010-Y



3727 | drift

LRV 31%
NCS S 4010-Y10R



3762 | loam

LRV 20%
NCS S 6005-G80Y



3708 | fossil

LRV 34%
NCS S 4005-Y20R



3709 | silt

LRV 22%
NCS S 5010-Y10R



3705 | meteorite

LRV 16%
NCS S 6502-Y



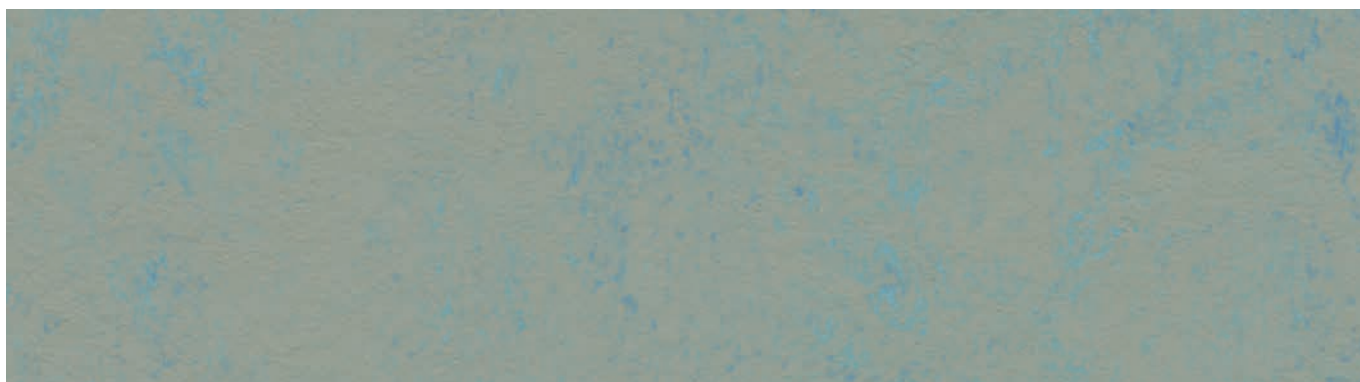
3733 | yellow shimmer

LRV 42%
NCS S 3010-G60Y



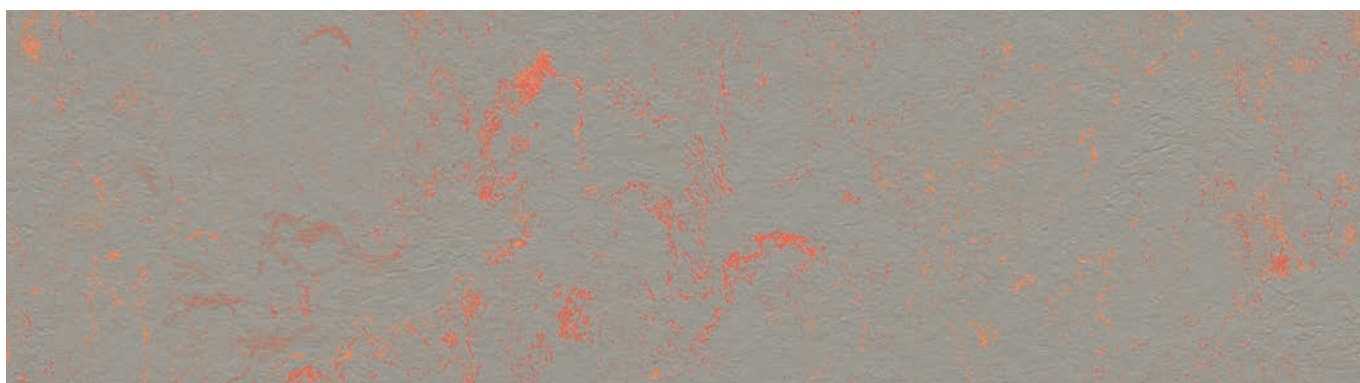
3736 | green shimmer

LRV 32%
NCS S 4005-G50Y



3763 | blue shimmer

LRV 29%
NCS S 4005-G



3712 | orange shimmer

LRV 31%
NCS S 4502-Y / 1050-Y50R



3650 | polar bear LRV 59%
NCS S 1505-G80Y



3630 | angora LRV 37%
NCS S 4010-Y10R



3631 | otter LRV 20%
NCS S 6005-Y20R



3629 | frosty grey LRV 49%
NCS S 2005-G50Y



3601 | warm grey LRV 32%
NCS S 3005-G50Y



3634 | meadow LRV 43%
NCS S 2030-G80Y



3642 | periwinkle LRV 24%
NCS S 4020-B



3607 | grey dusk LRV 11%
NCS S 7500-N



3647 | nettle green LRV 24%
NCS S 3040-G20Y

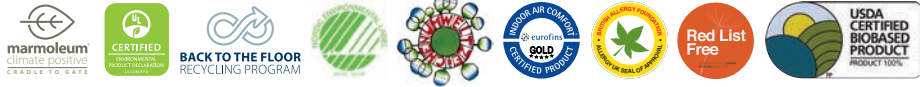


3645 | Neptune blue LRV 15%
NCS S 4040-B









Technical specifications

| | Marmoleum 2.5 mm Walton/ Concrete/ Cocoa/ Piano | | Marmoleum Decibel Walton/ Concrete/ Cocoa/ Piano | |
|--|--|--|---|---------------------------|
| Meets the requirements of | | EN ISO 24011 | | EN 686 |
| Total thickness | EN ISO 24346 | 2.5 mm | | 3.5 mm |
| Surface finish | | Topshield pro | | Topshield pro |
| Collection size | | 72 | | 72 |
| Domestic use | EN ISO 10874 | Class 23 | | Class 23 |
| Commercial use | EN ISO 10874 | Class 34 | | Class 33 |
| Light industrial use | EN ISO 10874 | Class 43 | | Class 41 |
| Roll width | EN ISO 24341 | 2.0 m | | 1.95 m / 2.0 m |
| Roll length | EN ISO 24341 | ≤ 33 m ¹ | | ≤ 33 m ¹ |
| Total weight | EN ISO 23997 | 2900 g/m ² | | 3100 g/m ² |
| Slip resistance (ramp test) | EN 16165 Annex B | R9 | | R9 |
| Castor chair continuous use | ISO 4918 | Pass | | Pass |
| Residual indentation <i>Typical value</i> | EN ISO 24343-1 | ≤ 0.15 mm ~ 0.08 mm | | ≤ 0.30 mm ~ 0.20 mm |
| Colour fastness to light | EN ISO 105-B02 method 3 | ≥ 6 | | ≥ 6 |
| Indoor air emissions: TVOC after 28 days | EN 16516 | ≤ 0,01 mg/m ³ | | ≤ 0,05 mg/m ³ |
| Bacteriostatic properties* | | Marmoleum has natural bacteriostatic properties which are confirmed by independent laboratories, even against MRSA bacteria. | | |
| Resistance to chemicals | EN ISO 26987 | Resistant to diluted acids, oils, fats and conventional solvents. Not resistant to prolonged exposure to alkalis. | | |
| Cigarette resistance | EN 1399 | There is no melting of the surface by cigarettes. Marks left on Marmoleum as a result of stubbed-out cigarettes can be removed. | | |
| Flexibility | EN-ISO 24344 | ø 40 mm | | ø 40 mm |
| Acoustical impact noise reduction | EN ISO 717-2 | ≤ 5 dB | | ≥ 18 dB |
| Creating better environments | | Life Cycle Assessment is the foundation for securing the lowest environmental impact. Marmoleum is climate positive cradle to gate** | | |
| Natural materials | | Marmoleum is a biobased floor made with up to 98 % natural ingredients (e.g. linseed oil, rosin, wood flour, jute and cocoa husks). Marmoleum contains PEFC certified wood flour. Marmoleum is free of PVC, PET, synthetic rubber and plasticizers. | | |
| Recycled content | | Marmoleum contains ingredients derived from recycled sources, which are a combination of post-industrial, post-installation and post-consumer streams of both flooring and non-flooring Marmoleum products. Marmoleum sheet installation off-cuts and post-consumer used flooring are recyclable. | | |
| Health and safety | | Marmoleum is REACH compliant to assure human safety and health. | | |
| Renewable electricity | | Marmoleum is manufactured using 100% electricity from renewable sources. | | |
| Green building certifications | | Application of Marmoleum sheet can help maximise contribution in green building certifications e.g. LEED, BREEAM, DGNB and WELL. | | |
| Application for underfloor heating | | yes | | |
| Meets the requirements of | | EN 14041:2004 | | EN 14041:2004 |
| DoP | | 0100201-DoP-107 | | 0100207-DoP-107 |
| Reaction to fire | EN 13501-1 | C _{fl} -s1,G,CS | | C _{fl} -s1,G,NCS |
| Slip resistance | EN 13893 | μ ≥ 0.30 | | μ ≥ 0.30 |
| Thermal conductivity | EN 12524 | 0.17 W/mK | | 0.17 W/mK |
| Body voltage | EN 1815 | ≤ 2.0 kV | | ≤ 2.0 kV |

* Marmoleum sheet can be installed nett fit, or with a welding rod in the seam. Both are proven hygienic solutions.

** For details, please consult the EPD for Marmoleum 4790690881.101.1

All Forbo Flooring Systems' sales organisations worldwide have a certified Quality Management System in accordance with ISO 9001.

All Forbo Flooring Systems' manufacturing operations have a certified Environmental Management System in accordance with ISO 14001.

The Life Cycle Assessment (LCA) of Forbo Flooring Systems' products is documented in individual Environmental Product Declarations (EPD's) which can be found on all of our websites.



Other countries

Forbo Flooring B.V.
P.O. Box 13
1560 AA Krommenie
The Netherlands
T: +31 75 647 74 77
question@forbo.com
www.forbo-flooring.com

Find us on



creating better environments



FLOORING SYSTEMS